

[Home](#) | [Account](#) | [Contact ALLDATA](#) | [Log Out](#) | [Help](#)

SHOWCASE HONDA

[Select Vehicle](#) | [New TSBs](#) | [Technician's Reference](#)Component Search:

Conversion Calculator

1985 Chevrolet Corvette V8-350 5.7L[Vehicle Level](#) → [Transmission and Drivetrain](#) → [Technical Service Bulletins](#) → [All Technical Service Bulletins](#) → [M/T - Damage From Roll Pin Not Seated Fully](#) ←**M/T - Damage From Roll Pin Not Seated Fully**[Notes](#)

85-31

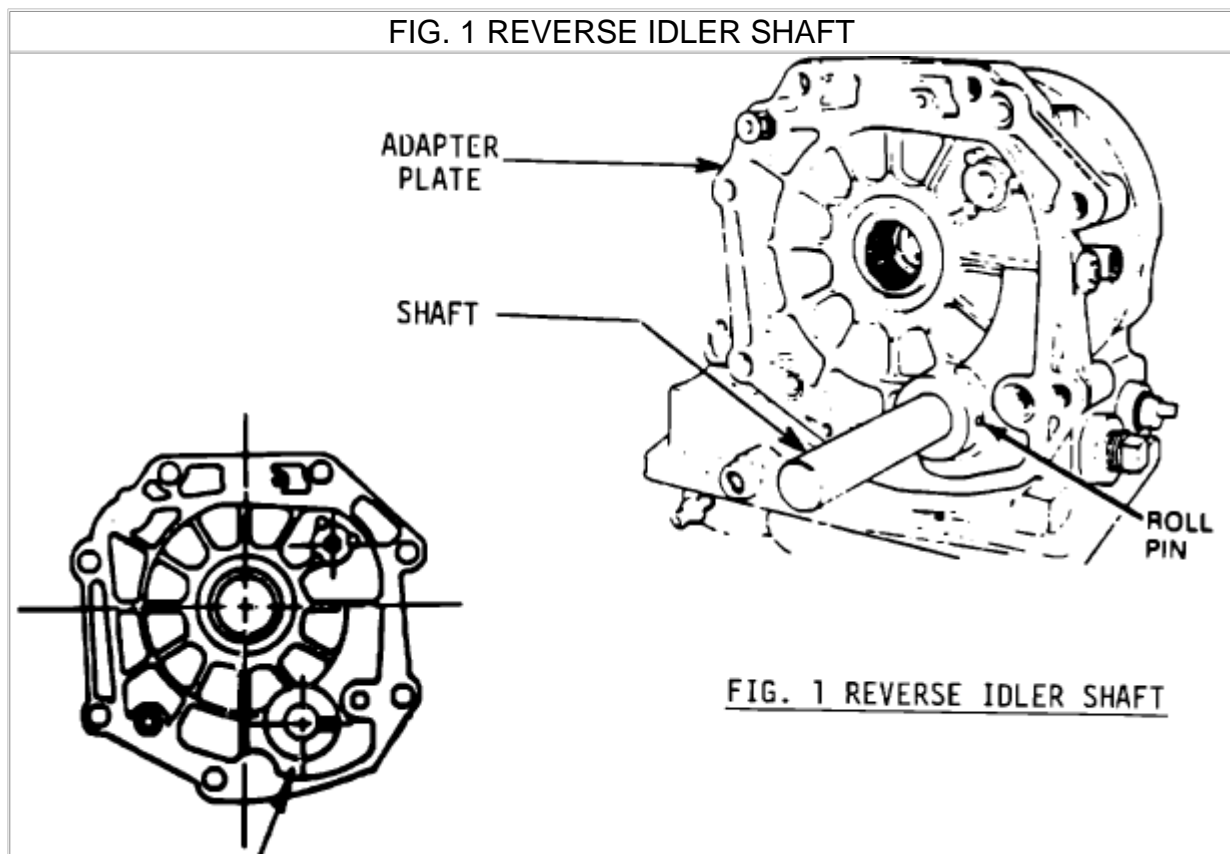
7B

Feb., 1985

Subject: DAMAGE TO TRANSMISSION DUE TO IMPROPERLY INSTALLED REVERSE IDLER SHAFT ROLL PIN - DOUG NASH MANUAL TRANSMISSION WITH AUTOMATIC OVERDRIVE

Model and Year: 1984-85 CORVETTE

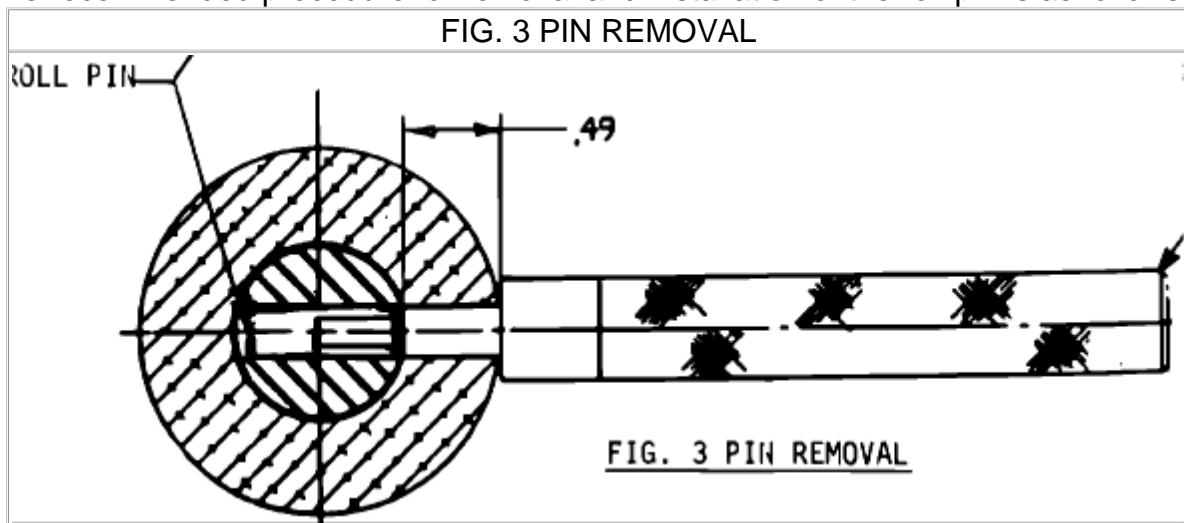
TO: ALL CHEVROLET DEALERS



Damage to the manual transmission may occur if the roll pin securing the reverse gear idler shaft to adapter plate (Figure 1) is not fully seated to prevent the shaft from spinning and/or backing out. To insure assembly operation results in the shaft

securely locked in place, the roll pin has been lengthened from 0.50" to 0.75". When servicing transmissions with the shorter roll pin (0.50"), discard the roll pin and replace with longer roll pin (0.75") maximum.

The recommended procedure for removal and installation of the roll pin is as follows:



Zoom

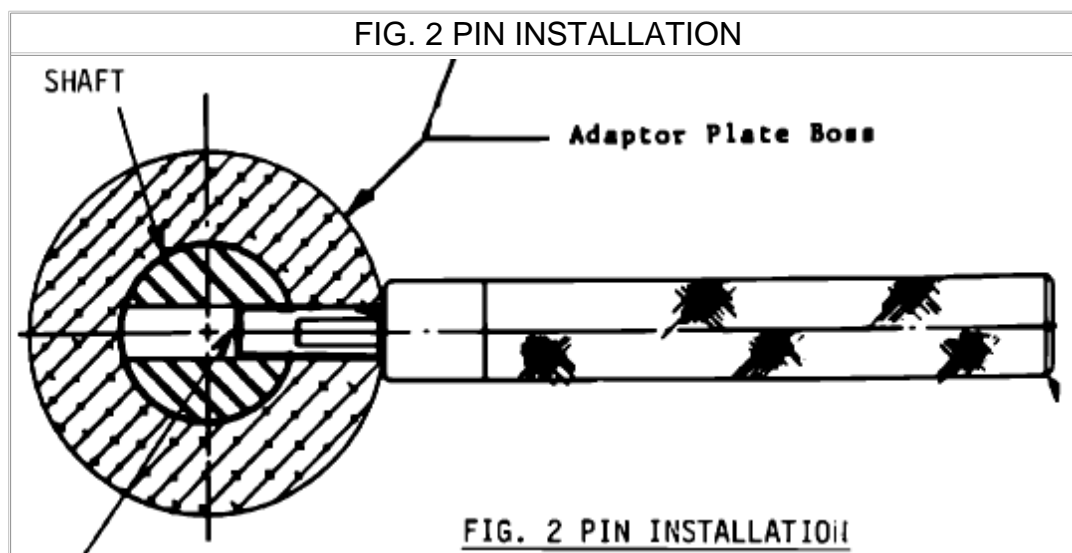
Sized for Print

A. PIN REMOVAL

1. Insert small punch tool into plate boss hole and carefully drive roll pin into reverse idler shaft (Figure 3) .

CAUTION: Driving roll pin too hard may cause to jam and result in shaft binding to adapter plate.

2. Pull reverse idler shaft from adapter plate and remove roll pin from shaft.



Zoom

Sized for Print

B. PIN INSTALLATION

1. Insert reverse idler shaft into adapter plate and align hole in shaft with hole in

plate boss.

2. Insert 0.75" roll pin into plate boss hole and, with small punch tool, carefully drive roll pin flush with plate boss (Figure 2).
3. Verify that shaft cannot be pulled from adapter plate.

© 2007 ALLDATA LLC. All rights reserved.

[Terms of Use](#)